



SolidWare
www.solidware-eg.com



Who We Are

Group of experts in information and communication technology, Logistics.

IT technology and industry are dramatically changing technologies, deep learning driven us to take the challenge to be a part of this transformation.

SolidWare provides services to small, medium, and large enterprise organizations both in the public and private sector.

This is executed through our office located in Smart Village.



Since inception “Solidware” has grown into a well-recognized service provider as which help our customers achieve their business goals.

SolidWare focus has evolved and adapted to all the latest business technologies to enable us to continuously provide state of the art service and products to our customers.

We are able to offer a wide variety of services as follows...

provides Datacenter Solutions.

provides Maintenance, Services, and Commercial.

provides all kind of logistics services.



SolidWare ensures service excellence through a collaborative delivery methodology that joins the forces of our expertise, our partners and our customers.

VISION

Becoming the center of excellence and service partner of choice of IT solutions & Logistics services in the region.

MISSION

Leveraging the technology edge across the region by providing state of the art economically efficient solutions that empower



PROPOSITION

Most of SolidWare initial customers are still customers today, testament to the enduring quality of the services we provide, as well as an on-going commitment to customer care, satisfaction and relationships.

We continuously deliver beyond the agreed business objectives.

Our creative approach finds unique and tailored solutions to address our customer's special needs.

Through preferred partnerships, we utilize our alliances to provide the best and most appropriate services for our customers.

The ongoing service is provided by a motivated team of the highest qualified technical experts in their field, which can meet any business objectives.

We are available 24/7.

SolidWare provides unique and creative Services that meet our customers' expectations - not only by realizing our customers' business objectives, but particularly by meeting ethical and social responsibilities in the communities in which we operate.





SERVICE OFFERING

SolidWare follows a solutions methodology that allows us to build partnerships for life with our customers.

This philosophy is achieved through committed and skilled team of staff that ensure that solutions are tailored for the specific needs that our customers' require our range of the service levels and solutions which we offer to our customers; which increase their efficiencies, enhance productivity and optimize costs.

These include...

- Datacenter Infrastructure
- Software
- Services & Support
- Spare Parts
- Commercial
- Logistics





Datacenter Infrastructure

Most of datacenter infrastructure vendors are supported in our scope with many successful references. However, we have a preferable vendors which are fully supported end - to - end by our company.

In servers & storages, Lenovo are our key players.

Sophos is maintaining to be a leader in the UTM Magic Quadrant of Gartner's. With Sophos you can secure your datacenter with affordable cost without compromising the performance.

Lenovo



DELL



Services & Maintenance Contract

Perhaps our greatest proficiency lies in providing state-of-the-art IT solutions and services that our customers can rely upon on a long-term basis.

Combining these strengths with the expertise of our highly skilled and professionally specialized team is essential to our strategy of offering our customers comprehensive infrastructure and security solutions.

SolidWare provides an extensive umbrella of services in the following areas:
(Consultation - Reviews and Assessment - Planning and Design - Integration Implementation - Technical support) .



Spare Parts

Protect your datacenter and don't wait to be at risk.

When it comes to in/out of support or even the end of support products,

we have a variety of critical spare list covering most of your datacenter brands.



Apple

Commercial

We deliver most of the commercial product lines like PCs, Workstations Monitors, and Printers etc.

What we are unique of; is combining the product with each other in a way to deliver an out of the box solution.

Just explain your need and leave the rest for us.

The Dell logo, consisting of the word "DELL" in a blue, sans-serif font with a stylized "E" that has three horizontal lines, is enclosed within a blue circular border.

The Lenovo logo, featuring the word "Lenovo" in white, sans-serif font on a red rectangular background, is enclosed within a red circular border.

The HP logo, featuring the lowercase letters "hp" in a white, italicized, sans-serif font on a blue circular background, is enclosed within a blue circular border.



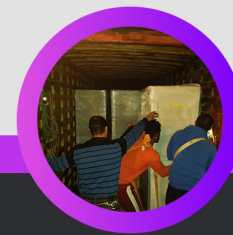
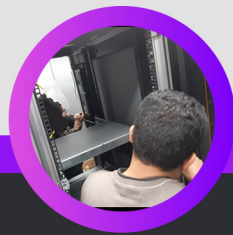
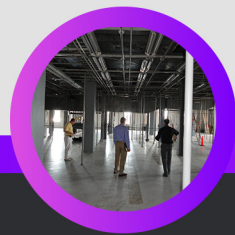
Logistics

The SolidWare team ensures that whatever your merchandise is, it's always in good hands. Our professional logistics aims to ensure high-quality service for Data Center Relocation and everything related to Information Technology (IT) ...

Data Center Relocation

(Questionnaire about the site - Disassembly and division - Packaging - Loading and unloading - Safe transportation - Covered by Insurance)

“Our Goal is to Cover your Projects to Reach The Best Results”





HC Securities & Investment



Customers
Financial Sector



Customers
Industrial Sector



El Alsson
British & American
International School

Customers
Education Sector

B. TECH

DP WORLD 

mbc[®]
GROUP

National Technology
Clinical Information Systems

Reefy TM
 ريفي

Xceed

Customers
Private Sector



SolidWare
www.solidware-eg.com

Contact Us

- Add : Villa A97, El Lebeny Axis, Giza, Egypt.
- Tel : +202375 - 26422 • Fax : +202375 - 26422 • Mobile : +2012216 - 36625
- Email : info@SolidWare-eg.com • Web : www.SolidWare-eg.com